





Fentanyl Patch Drug Information

109.07.18 中文修訂
113.04 ENG 藥衛 063

Generic Name	Brand Name	Dosage Form	Appearance
Fentanyl	Durogesic	12 mcg/h Transdermal Patch	
Fentanyl	Fentanyl	25 mcg/h Transdermal Patch	
Fentanyl	Fentanyl	50 mcg/h Transdermal Patch	

1. Why do I need this medicine?

To relieve your pain.

2. How is this drug best taken?



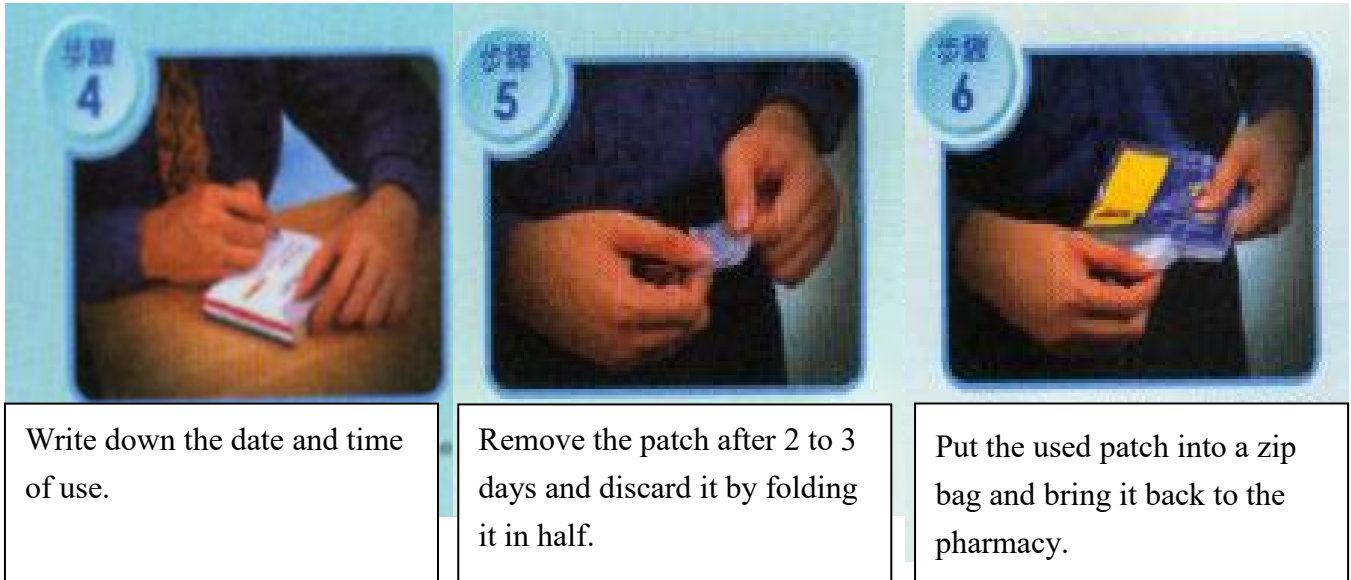
Tear open the packaging before use, remove the patch, and peel off the backing.



Choose a suitable area, clean it, and apply the patch only after it has dried.



Wash your hands with plain water after use. Avoid using soap.



3. What are some things I need to know or do while I take this drug?

- (1) Apply the patch to clean, dry, and intact skin. It is recommended to place it on your chest, back, or upper arms. (No need to apply to areas that are painful.)
- (2) Avoid areas with wounds or undergoing radiation therapy.
- (3) After opening, apply the patch as soon as possible. Press firmly for about thirty seconds to ensure the patch is fully adhered to your skin. Change where you apply each time to prevent skin irritation. **Trim the hair at the site with scissors if needed, but avoid using a razor to prevent injury.**
- (4) Do not cut the patch to avoid damaging its controlled-release dosage form.
- (5) Inform your doctor if you have ever experienced an allergy to this kind of patch.
- (6) Inform your doctor if you have any other medical conditions, are taking other drugs, pregnant, or breastfeeding.
- (7) You may have difficulty concentrating, so do not drive or operate dangerous machines to avoid accidents.
- (8) Avoid taking hot baths or direct contact of the patch with heat sources such as hot water bottles or a electric blanket.
- (9) Do not stop your previous pain medication immediately when you start using this patch. Please taper off gradually as instructed.
- (10) If sudden pain occurs, applying another patch will not provide immediate relief. Instead, you may take additional pain medication as needed.
- (11) Reminders:
 - Please complete the record sheet by writing down when you apply and remove the patch, and sign your name.

- Fold the used patch in half and put it into a zip bag.
- Have your doctor sign the record sheet during follow-up visits, and bring both the sheet and the used patches back to the pharmacy.
- According to regulations, [any loss of this patch must be reported and explained](#) or else prescription renewal may be denied.

4. Possible side effects

Possible side effects include allergic reactions, nausea, low blood pressure, vomiting, constipation, and drowsiness. If symptoms such as dry mouth, sweating, dizziness, headache, facial flushing, mood changes, fast heart rate, hallucinations, and urinary retention persist or become severe, please inform your doctor. If you experience respiratory depression or severe hypotension, seek medical attention immediately.

5. What do I do if I miss a dose?

Apply the patch as soon as you remember. Use only one patch at a time even if it's close to your next application time. Do not apply two patches at a time.

6. How do I store this drug?

Do not store this drug in wet or overheated areas. Keep it away from direct sunlight and out of reach of children.

*This leaflet cannot provide complete drug information.
Please consult a doctor or pharmacist if you have any questions.

Cheng Hsin General Hospital Medication Counseling Number
+886-2-2826-4400 #5604 #5605